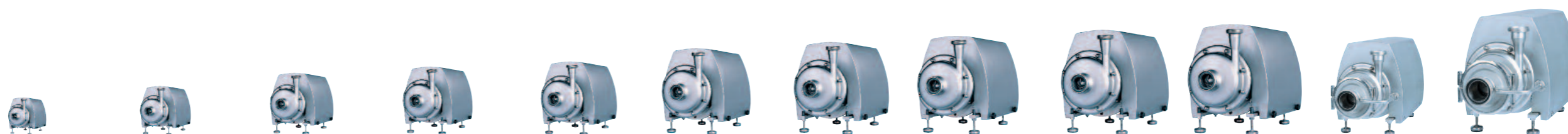


GEA Tuchenhagen®-VARIFLOW
Kreiselpumpen TP & TPS
Centrifugal Pumps TP & TPS



normalsaugend
non self-priming

selbstaugend
self-priming

	TP 1020	TP 1540	TP 2030	TP 2050	TP 2575	TP 3050	TP 5060	TP 7060	TP 8080	TP 16040	TPS 2030	TPS 3050	
2-polig/2-pole	max. Fördermenge [m³/h] <i>max. flow rates [m³/h]</i>	18	35	35	35	44	70	80	120	110	220	34	69
	max. Förderhöhe [m] <i>max. pump heads [m]</i>	23	42	36	62	85	65	74	74	90	48	37	64
	Motorleistung kW, 2-pol. <i>Motor power kW, 2-pole</i>	1,1 - 5,5	3,0 - 15,0	1,5 - 11,0	3,0 - 15,0	5,5 - 30,0	3,0 - 22,0	5,5 - 30,0	7,5 - 30,0	11,0 - 37,0	11,0 - 45	2,2 - 11,0	3,0 - 22,0
4-polig/4-pole	max. Fördermenge [m³/h] <i>max. flow rates [m³/h]</i>	10	20	20	17	20	40	50	55	40	110	n.a.	n.a.
	max. Förderhöhe [m] <i>max. pump heads [m]</i>	6	11	9	15	31	16	27	19	18	12	n.a.	n.a.
	Motorleistung kW, 4-pol. <i>Motor power kW, 4-pole</i>	0,75 - 3,0	0,75 - 3,0	0,75 - 5,5	0,75 - 4,0	3,0 - 18,5	0,75 - 7,5	2,2 - 16,0	3,0 - 15,0	4,0 - 18,5	3,0 - 18,5	n.a.	n.a.
Laufrad Ø <i>Impeller Ø</i>	80 - 130	130 - 180	110 - 160	160 - 210	200 - 250	140 - 210	155 - 225	175 - 225	180 - 250	160 - 200	110 - 160	140 - 210	
NPSH (2.900 1/min.) <i>NPSH (2,900 rpm)</i>	1,0m	1,0m	1,0m	0,5m	0,8m	0,7m	0,9m	0,7m	0,8m	3,8m	0,8m	0,8m	
max Viskosität mPas <i>max viscosity mPas</i>	1.000										500		